



NEWINGTON
LONDON

1 Bedrooms

Apartment

Located in London

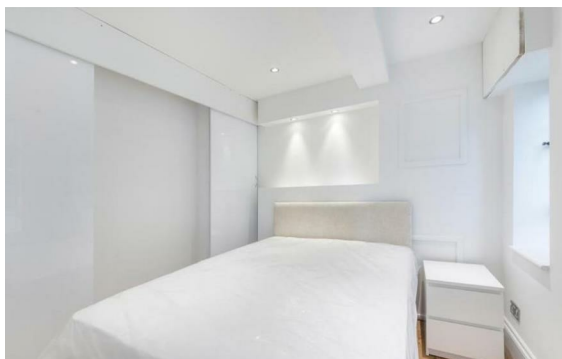
£635 Per Month



info@newingtonstates.com

<http://www.newingtonstates.com>

020 7724 2233



NEWINGTON

LONDON

60 Upper Montagu Street

London

W1H 1SN

020 7724 2233

info@newingtonstates.com

A recently refurbished one-bedroom apartment set within a sought-after portered development in the heart of Marylebone. The property is well presented throughout and features a bright, well-proportioned reception room, a separate fully fitted kitchen, and a generous double bedroom with ample built-in storage and a dedicated desk area. The apartment offers comfortable and practical living in a prime central London location.

EPC rating: C

Energy Efficiency Rating: C

Agents Note: Whilst every care has been taken to prepare these particulars, they are for guidance purposes only. All measurements are approximate and are for general guidance purposes only and whilst every care has been taken to ensure their accuracy, they should not be relied upon and potential buyers/tenants are advised to recheck the measurements.

<http://www.newingtonstates.com>